



35 ALBERTA DRIVE

IM3 1LU

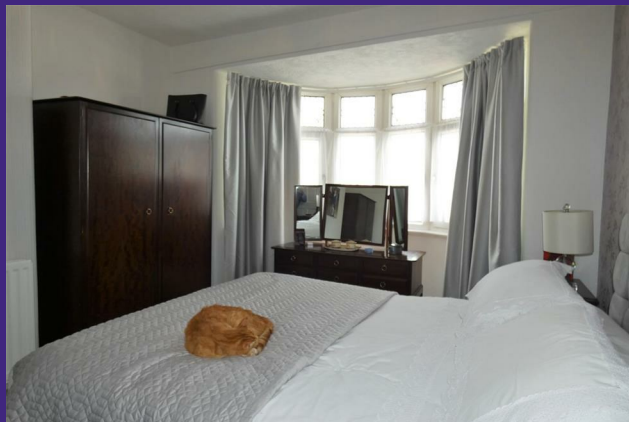
£385,000
FREEHOLD

With its inviting layout and practical amenities, this semi-detached house on Alberta Drive is a wonderful place to call home. Whether you are looking to settle down or invest in a property with great potential, this residence offers a perfect blend of comfort and functionality. Do not miss the chance to view this lovely home in a sought-after location.

 **Plum
Properties**

T: 01624 820600
E: hello@plumproperties.im
W: www.plumproperties.im

• Semi-Detached Family Home • Three Bedrooms • Modern Breakfast Kitchen • Lounge, Dining Room, Cloakroom • Good Size Bathroom • South Facing Rear Garden • Large Garage and Driveway for Three Cars • uPVC Double Glazing



Overview

Nestled in the charming area of Alberta Drive, Onchan, this delightful three-bedroom semi-detached house presents an excellent opportunity for families and professionals alike. The property boasts two spacious reception rooms, providing ample space for relaxation and entertaining guests.

The three well-proportioned bedrooms offer comfortable living quarters, perfect for a growing family or those seeking extra space for a home office. The bathroom is conveniently located, ensuring ease of access for all residents.

One of the standout features of this property is the generous parking space, accommodating up to three vehicles, which is a rare find in many urban settings. This feature adds to the convenience and appeal of the home, making it ideal for those with multiple cars or visitors.

Additional Information

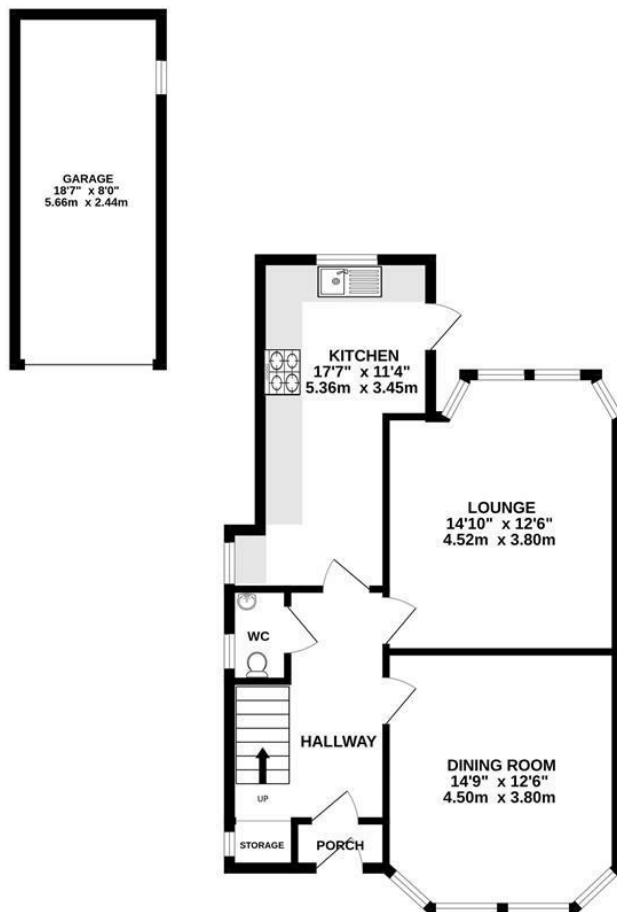
- Gas Central Heating
- School Catchment Area: Onchan, Ashley Hill, Saint Ninians High Schhol

Directions

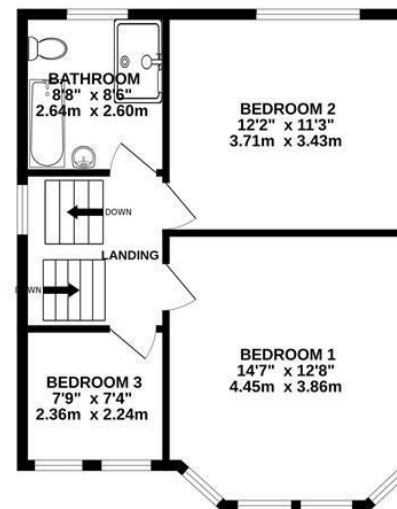
Travelling out of Douglas along the Promenade, turning up Summerhill towards Onchan. Take the fourth turning on the right hand side into Alberta Drive and continue along, where the property can be found on the right hand side.



GROUND FLOOR
763 sq.ft. (70.9 sq.m.) approx.



1ST FLOOR
529 sq.ft. (49.1 sq.m.) approx.



TOTAL FLOOR AREA : 1292 sq.ft. (120.0 sq.m.) approx.

Whilst every attempt has been made to ensure the accuracy of the floorplan contained here, measurements of doors, windows, rooms and any other items are approximate and no responsibility is taken for any error, omission or mis-statement. This plan is for illustrative purposes only and should be used as such by any prospective purchaser. The services, systems and appliances shown have not been tested and no guarantee as to their operability or efficiency can be given.

Made with Metropix ©2023



Head Office Sales
1 Athol Street
Douglas
Isle Of Man
IM1 1LD

T: 01624 820600
E: hello@plumproperties.im
W: www.plumproperties.im

Agents Note: Whilst every care has been taken to prepare these particulars, they are for guidance purposes only. All measurements are approximate and are for general guidance purposes only and whilst every care has been taken to ensure their accuracy, they should not be relied upon and potential buyers/tenants are advised to recheck the measurements